



Outdoor use
Split core type
current transformer

LIYOU/里欧

**Smart Grid / Energy Management / Smart Firefighting
Wind Energy / Photovoltaic Energy / Energy Storage Equipment**

Wuxi Liou Electronics Co Ltd

Professional current transformers & sensors manufacturer

*E*xpanding Possibilities

www.ctsensorducer.com

LO-CTHW Split-core type out door water-proof current transformer

*E*xpanding Possibilities

Professional current transformers & sensors manufacturer



Wuxi Liou Electronics Co Ltd
www.ctsensoreducer.com

SERIES: LO-CTHW



Split-core type out door water-proof current transformer

>Product overview

The most notable feature of this series of current transformers is its waterproof capability, making it suitable for outdoor use. The cut surface port is surrounded by a rubber gasket to prevent rainwater from entering. While most so-called waterproof transformers on the market also adopt this rubber gasket method, relying solely on this approach has limitations, as it cannot guarantee waterproofing of the entire transformer body.

Our company utilizes one-piece molding technology, where the transformer is directly formed as a solid body within the mold. The plastic completely and seamlessly encases the entire transformer. In addition, the secondary side leads are equipped with waterproof terminals and sheathed cables, ensuring not a single drop of rainwater can enter the transformer body.

Tested and certified by authoritative institutions, our transformers have achieved an IP67/IP65 waterproof rating. This product complies with the relevant requirements of IEC61869-1 and IEC61869-2 standards.

>Application

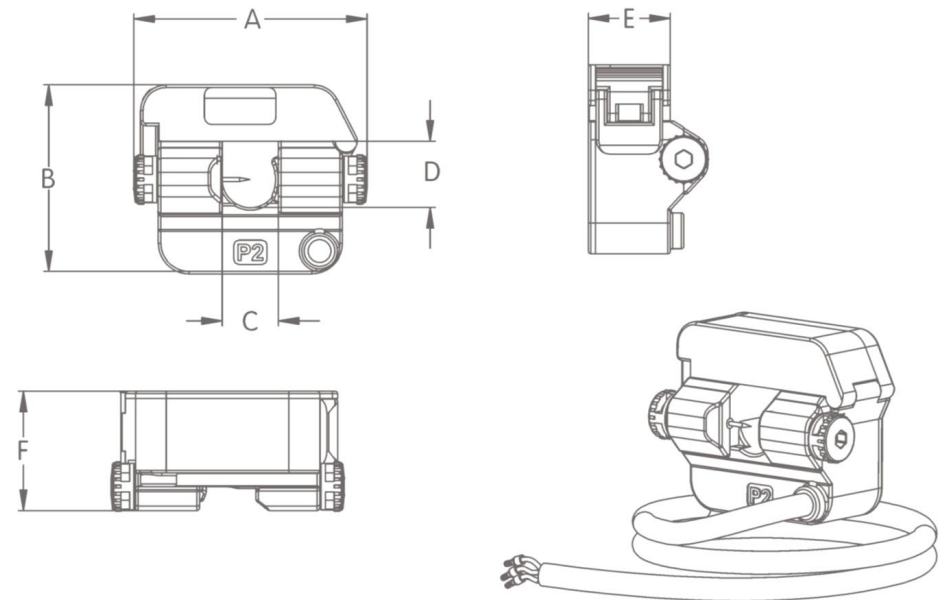
- Electrical fire monitoring system
- Fire equipment power supply monitoring system
- Intelligent power system
- Smart grid, substation transformation
- Environmental protection detection
- Small current grounding system
- Relay protection
- Motor protection system

>Electrical specifications:

Electrical specifications	
Standards	IEC61869-1,-2
Voltage level	0.4/0.66/0.69/0.72KV
Load Capacity	5VA/2.5VA
Accuracy class	0.5s,0.5,1.0
Operating frequency	50-60Hz
Shell material	PA/PC Flame retardant UL94V-0
Core material	Nanocrystalline/ Silicon steel/ Ferrite core
Altitude	3000M
Protection level	IP65/ IP67
Internal structure	Waterproof seal ring / puncture needle
Operating temperature	-40℃ ~ +70℃
Dielectric strength	3.75KVAC/Min

P/N	INPUT (A)	Output	Accuracy	DIMENSIONS(mm)					
				A	B	C	D	E	F
LO-CTHW-22	0-400A	0-5A 0-1V	0.5s 0.5 1.0	91.5	73	22	26	32	46.7
LO-CTHW-36	0-800A			105.2	84	36	36	32	46.7

>Dimensions:



Expanding possibilities

www.ctsensorducer.com

LO-CTOD1 Split-core type out door water-proof current transformer

Professional current transformers & sensors manufacturer

*E*xpanding Possibilities



Wuxi Liou Electronics Co Ltd
www.ctsensorducer.com

SERIES: LO-CTOD1



Split-core type out door water-proof current transformer

>Product overview

The most notable feature of this series of current transformers is its waterproof capability, making it suitable for outdoor use. The cut surface port is surrounded by a rubber gasket to prevent rainwater from entering. While most so-called waterproof transformers on the market also adopt this rubber gasket method, relying solely on this approach has limitations, as it cannot guarantee waterproofing of the entire transformer body.

Our company utilizes one-piece molding technology, where the transformer is directly formed as a solid body within the mold. The plastic completely and seamlessly encases the entire transformer. In addition, the secondary side leads are equipped with waterproof terminals and sheathed cables, ensuring not a single drop of rainwater can enter the transformer body.

Tested and certified by authoritative institutions, our transformers have achieved an IP67/IP65 waterproof rating. This product complies with the relevant requirements of IEC61869-1 and IEC61869-2 standards.

>Application

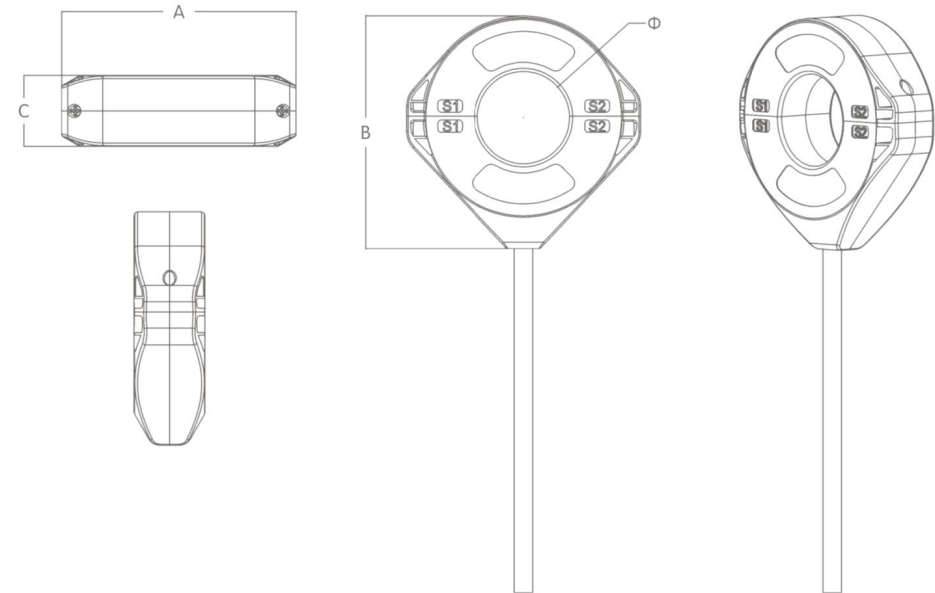
- Electrical fire monitoring system
- Fire equipment power supply monitoring system
- Intelligent power system
- Smart grid, substation transformation
- Environmental protection detection
- Small current grounding system
- Relay protection
- Motor protection system

>Electrical specifications:

Electrical specifications	
Standards	IEC61869-1,-2
Voltage level	0.4/0.66/0.69/0.72KV
Load Capacity	5VA/2.5VA
Accuracy class	0.5s,0.5,1.0
Operating frequency	50-60Hz
Shell material	PA/PC Flame retardant UL94V-0
Core material	Nanocrystalline/ Silicon steel/ Ferrite core
Altitude	3000M
Protection level	IP65/ IP67
Internal structure	Waterproof seal ring / puncture needle
Operating temperature	-40℃ ~ +70℃
Dielectric strength	3.75KVAC/Min

P/N	INPUT	Output	Accuracy	Ø	DIMENSIONS(mm)		
	(A)				A	B	C
LO-CTOD1-36P	0-600A	0-5A 0-1V	0.5s 0.5 1.0	36	118	118	40
LO-CTOD1-60P	0-1500A			60	152	150	46

>Dimensions:



Expanding possibilities

www.ctsensorducer.com

LO-CTHW2 Split-core type out door water-proof current transformer

Professional current transformers & sensors manufacturer

*E*xpanding Possibilities



Wuxi Liou Electronics Co Ltd
www.ctsensorducer.com

SERIES: LO-CTHW2



Split-core type out door water-proof current transformer

>Product overview

The most notable feature of this series of current transformers is its waterproof capability, making it suitable for outdoor use. The cut surface port is surrounded by a rubber gasket to prevent rainwater from entering. While most so-called waterproof transformers on the market also adopt this rubber gasket method, relying solely on this approach has limitations, as it cannot guarantee waterproofing of the entire transformer body.

Our company utilizes one-piece molding technology, where the transformer is directly formed as a solid body within the mold. The plastic completely and seamlessly encases the entire transformer. In addition, the secondary side leads are equipped with waterproof terminals and sheathed cables, ensuring not a single drop of rainwater can enter the transformer body.

Tested and certified by authoritative institutions, our transformers have achieved an IP67/IP65 waterproof rating. This product complies with the relevant requirements of IEC61869-1 and IEC61869-2 standards.

>Application

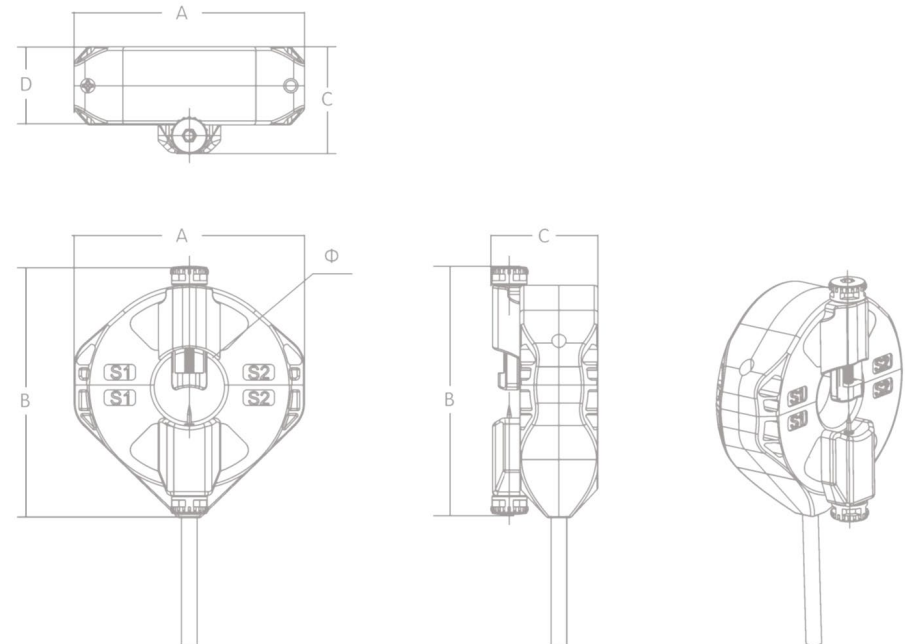
- Electrical fire monitoring system
- Fire equipment power supply monitoring system
- Intelligent power system
- Smart grid, substation transformation
- Environmental protection detection
- Small current grounding system
- Relay protection
- Motor protection system

>Electrical specifications:

Electrical specifications	
Standards	IEC61869-1,-2
Voltage level	0.4/0.66/0.69/0.72KV
Load Capacity	5VA/2.5VA
Accuracy class	0.5s,0.5,1.0
Operating frequency	50-60Hz
Shell material	PA/PC Flame retardant UL94V-0
Core material	Nanocrystalline/ Silicon steel/ Ferrite core
Altitude	3000M
Protection level	IP65/ IP67
Internal structure	Waterproof seal ring / puncture needle
Operating temperature	-40℃ ~ +70℃
Dielectric strength	3.75KVAC/Min

P/N	INPUT (A)	Output	Accuracy	DIMENSIONS(mm)				
				∅	A	B	C	D
LO-CTHW2-36	0-600A	0-5A 0-1V	0.5s 0.5 1.0	36	118	118	55	40
LO-CTHW2-60	0-1500A			60	152	150	60	46

>Dimensions:



Expanding possibilities

www.ctsensorducer.com

LO-CTHW3 Split-core type out door water-proof current transformer

*E*xpanding Possibilities

Professional current transformers & sensors manufacturer



Wuxi Liou Electronics Co Ltd
www.ctsensorducer.com

SERIES: LO-CTHW3



Split-core type out door water-proof current transformer

>Product overview

The most notable feature of this series of current transformers is its waterproof capability, making it suitable for outdoor use. The cut surface port is surrounded by a rubber gasket to prevent rainwater from entering. While most so-called waterproof transformers on the market also adopt this rubber gasket method, relying solely on this approach has limitations, as it cannot guarantee waterproofing of the entire transformer body.

Our company utilizes one-piece molding technology, where the transformer is directly formed as a solid body within the mold. The plastic completely and seamlessly encases the entire transformer. In addition, the secondary side leads are equipped with waterproof terminals and sheathed cables, ensuring not a single drop of rainwater can enter the transformer body.

Tested and certified by authoritative institutions, our transformers have achieved an IP67/IP65 waterproof rating. This product complies with the relevant requirements of IEC61869-1 and IEC61869-2 standards.

>Application

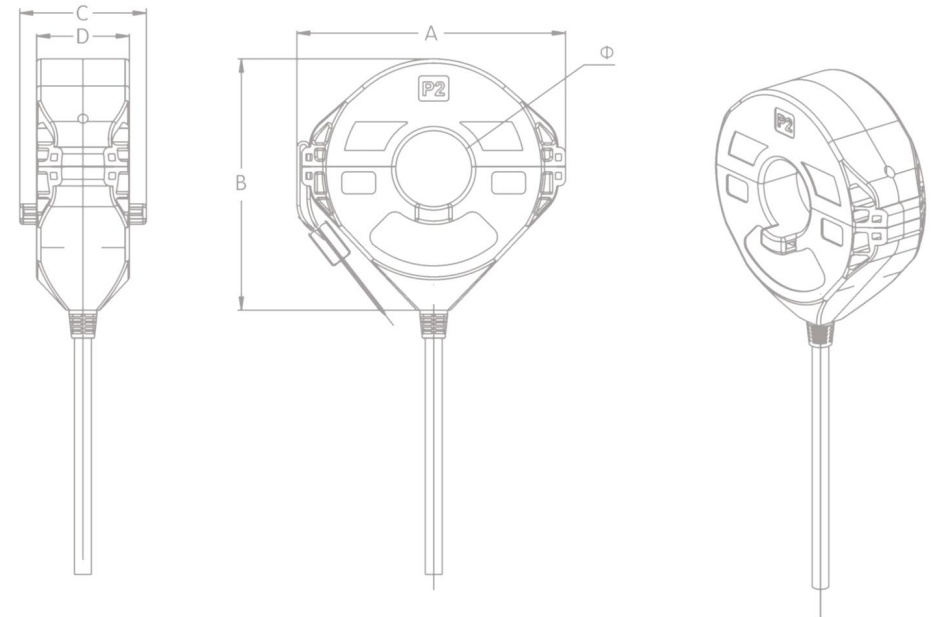
- Electrical fire monitoring system
- Fire equipment power supply monitoring system
- Intelligent power system
- Smart grid, substation transformation
- Environmental protection detection
- Small current grounding system
- Relay protection
- Motor protection system

>Electrical specifications:

Electrical specifications	
Standards	IEC61869-1,-2
Voltage level	0.4/0.66/0.69/0.72KV
Load Capacity	5VA/2.5VA
Accuracy class	0.5s,0.5,1.0
Operating frequency	50-60Hz
Shell material	PA/PC Flame retardant UL94V-0
Core material	Nanocrystalline/ Silicon steel/ Ferrite core
Altitude	3000M
Protection level	IP65/ IP67
Internal structure	Waterproof seal ring / puncture needle
Operating temperature	-40℃ ~ +70℃
Dielectric strength	3.75KVAC/Min

P/N	INPUT	Output	Accuracy	DIMENSIONS(mm)				
	(A)			Ø	A	B	C	D
LO-CTHW3-45	0-800A	0-5A 0-1V	0.5s	45	156	150	75	55
LO-CTHW3-60	0-2000A		0.5	60	175	165	85	55
LO-CTHW3-80	0-4000A		1.0	80	200	190	80	55

>Dimensions:



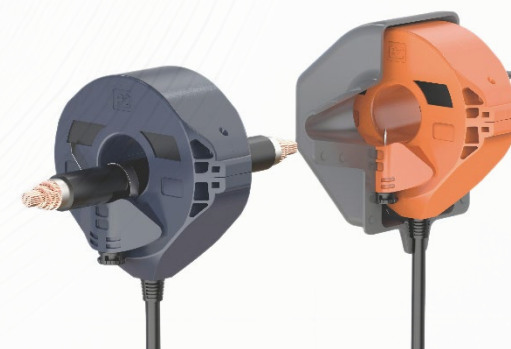
Expanding possibilities

www.ctsensorducer.com

LO-CTHW4 Split-core type out door water-proof current transformer

Professional current transformers & sensors manufacturer

*E*xpanding Possibilities



Wuxi Liou Electronics Co Ltd
www.ctsensorducer.com

SERIES: LO-CTHW4



Split-core type out door water-proof current transformer

>Product overview

The most notable feature of this series of current transformers is its waterproof capability, making it suitable for outdoor use. The cut surface port is surrounded by a rubber gasket to prevent rainwater from entering. While most so-called waterproof transformers on the market also adopt this rubber gasket method, relying solely on this approach has limitations, as it cannot guarantee waterproofing of the entire transformer body.

Our company utilizes one-piece molding technology, where the transformer is directly formed as a solid body within the mold. The plastic completely and seamlessly encases the entire transformer. In addition, the secondary side leads are equipped with waterproof terminals and sheathed cables, ensuring not a single drop of rainwater can enter the transformer body.

Tested and certified by authoritative institutions, our transformers have achieved an IP67/IP65 waterproof rating. This product complies with the relevant requirements of IEC61869-1 and IEC61869-2 standards.

>Application

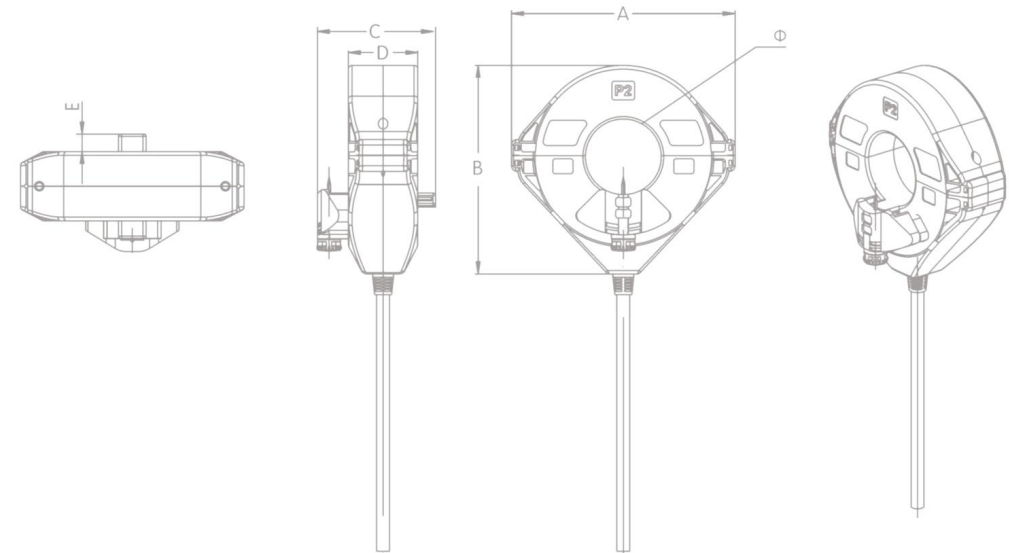
- Electrical fire monitoring system
- Fire equipment power supply monitoring system
- Intelligent power system
- Smart grid, substation transformation
- Environmental protection detection
- Small current grounding system
- Relay protection
- Motor protection system

>Electrical specifications:

Electrical specifications	
Standards	IEC61869-1,-2
Voltage level	0.4/0.66/0.69/0.72KV
Load Capacity	5VA/2.5VA
Accuracy class	0.5s, 0.5, 1.0
Operating frequency	50-60Hz
Shell material	PA/PC Flame retardant UL94V-0
Core material	Nanocrystalline/ Silicon steel/ Ferrite core
Altitude	3000M
Protection level	IP65/ IP67
Internal structure	Waterproof seal ring / puncture needle
Operating temperature	-40 °C ~ +70 °C
Dielectric strength	3.75KVAC/Min

P/N	INPUT (A)	Output	Accuracy	DIMENSIONS(mm)					
				Ø	A	B	C	D	E
LO-CTHW4-45	0-800A	0-5A 0-1V	0.5s 0.5 1.0	45	156	150	86	55	10
LO-CTHW4-60	0-2000A			60	175	165	94	55	14
LO-CTHW4-80	0-4000A			80	200	190	90	58	11

>Dimensions:



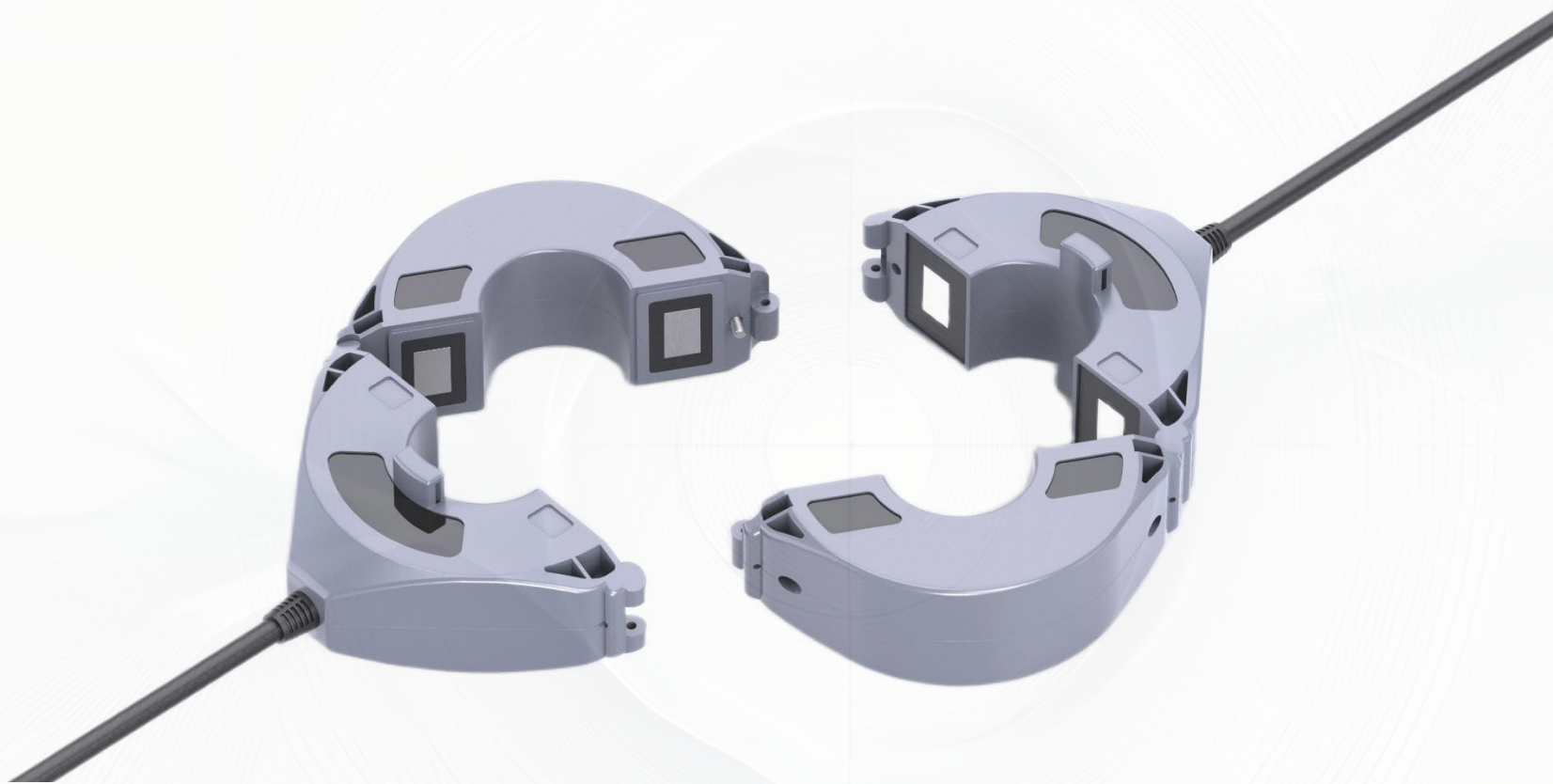
Expanding possibilities

www.ctsensorducer.com

LO-CTHW5 Split-core type out door water-proof current transformer

Professional current transformers & sensors manufacturer

*E*xpanding Possibilities



Wuxi Liou Electronics Co Ltd
www.ctsensoreducer.com

SERIES: LO-CTHW5



Split-core type out door water-proof current transformer

>Product overview

The most notable feature of this series of current transformers is its waterproof capability, making it suitable for outdoor use. The cut surface port is surrounded by a rubber gasket to prevent rainwater from entering. While most so-called waterproof transformers on the market also adopt this rubber gasket method, relying solely on this approach has limitations, as it cannot guarantee waterproofing of the entire transformer body.

Our company utilizes one-piece molding technology, where the transformer is directly formed as a solid body within the mold. The plastic completely and seamlessly encases the entire transformer. In addition, the secondary side leads are equipped with waterproof terminals and sheathed cables, ensuring not a single drop of rainwater can enter the transformer body.

Tested and certified by authoritative institutions, our transformers have achieved an IP67/IP65 waterproof rating. This product complies with the relevant requirements of IEC61869-1 and IEC61869-2 standards.

>Application

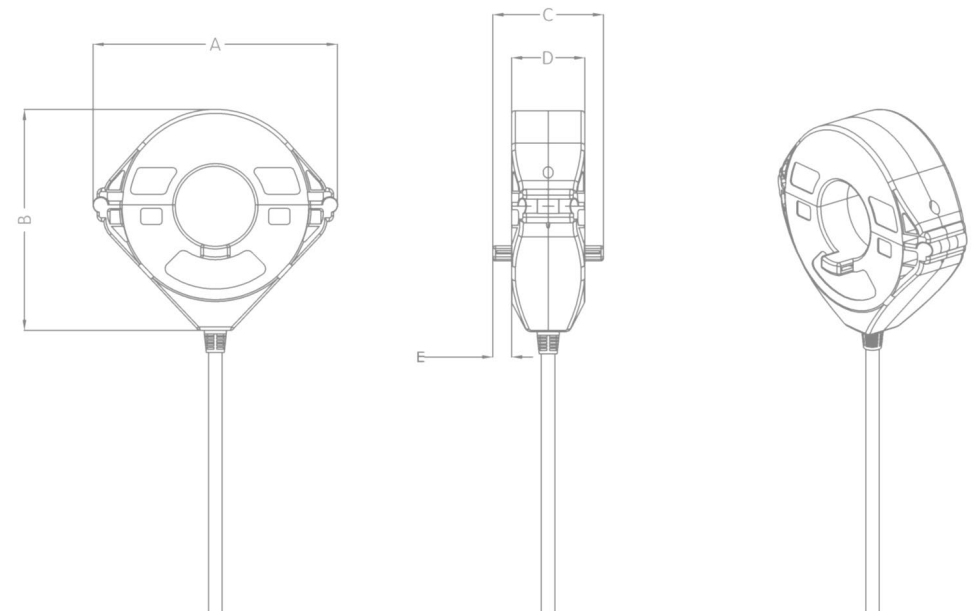
- Electrical fire monitoring system
- Fire equipment power supply monitoring system
- Intelligent power system
- Smart grid, substation transformation
- Environmental protection detection
- Small current grounding system
- Relay protection
- Motor protection system

>Electrical specifications:

Electrical specifications	
Standards	IEC61869-1,-2
Voltage level	0.4/0.66/0.69/0.72KV
Load Capacity	5VA/2.5VA
Accuracy class	0.5s,0.5,1.0
Operating frequency	50-60Hz
Shell material	PA/PC Flame retardant UL94V-0
Core material	Nanocrystalline/ Silicon steel/ Ferrite core
Altitude	3000M
Protection level	IP65/ IP67
Internal structure	Waterproof seal ring / puncture needle
Operating temperature	-40 °C ~ +70 °C
Dielectric strength	3.75KVAC/Min

P/N	INPUT	Output	Accuracy	DIMENSIONS(mm)					
	(A)			Ø	A	B	C	D	E
LO-CTHW5-45	0-800A	0-5A 0-1V	0.5s	45	156	150	75	55	10
LO-CTHW5-60	0-2000A		0.5	60	177	165	85	55	14
LO-CTHW5-80	0-4000A		1.0	80	200	190	80	55	11

>Dimensions:



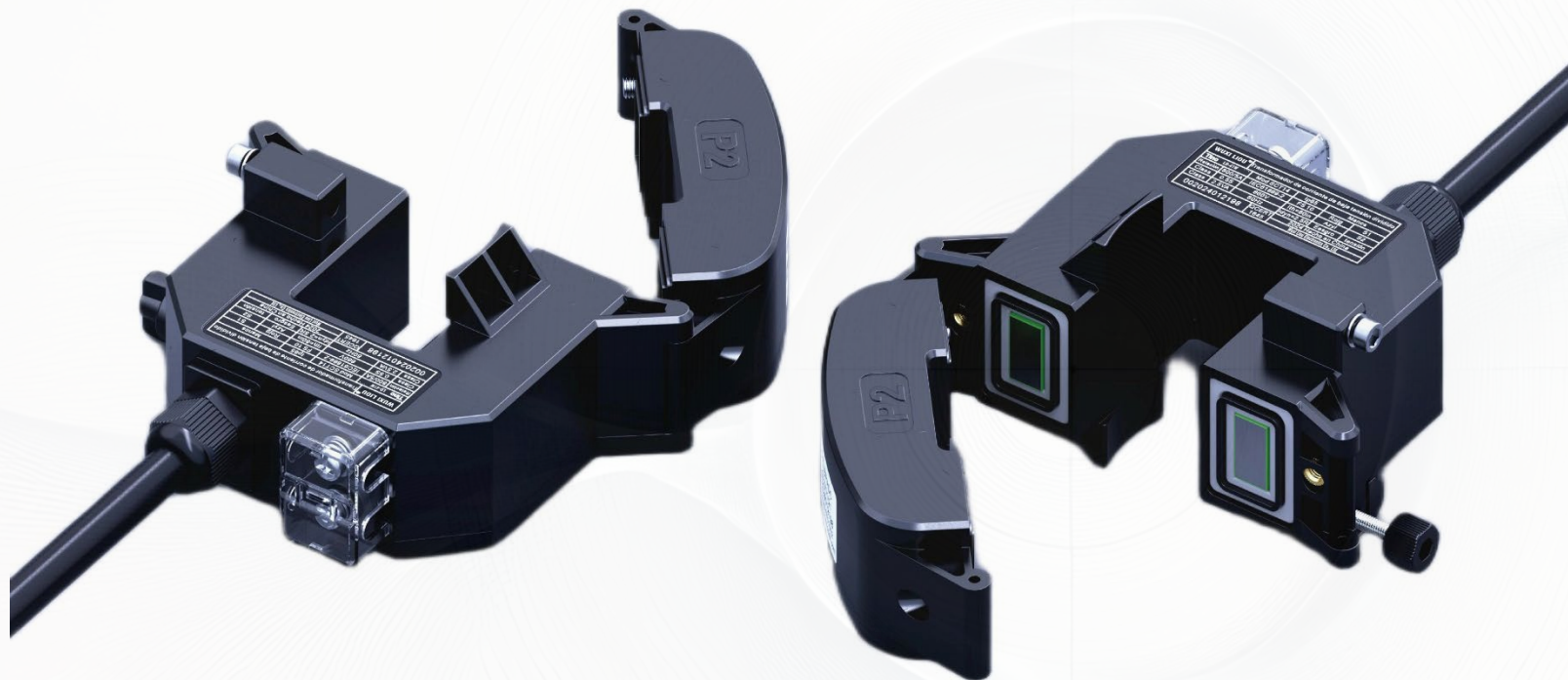
Expanding possibilities

www.ctsensorducer.com

LO-CTHW6 Split-core type out door water-proof current

Professional current transformers & sensors manufacturer

*E*xpanding Possibilities



Wuxi Liou Electronics Co Ltd
www.ctsensoreducer.com

SERIES: LO-CTHW6



Split-core type out door water-proof current transformer

>Product overview

The most notable feature of this series of current transformers is its waterproof capability, making it suitable for outdoor use. The cut surface port is surrounded by a rubber gasket to prevent rainwater from entering. While most so-called waterproof transformers on the market also adopt this rubber gasket method, relying solely on this approach has limitations, as it cannot guarantee waterproofing of the entire transformer body.

Our company utilizes one-piece molding technology, where the transformer is directly formed as a solid body within the mold. The plastic completely and seamlessly encases the entire transformer. In addition, the secondary side leads are equipped with waterproof terminals and sheathed cables, ensuring not a single drop of rainwater can enter the transformer body.

Tested and certified by authoritative institutions, our transformers have achieved an IP67/IP65 waterproof rating. This product complies with the relevant requirements of IEC61869-1 and IEC61869-2 standards.

>Application

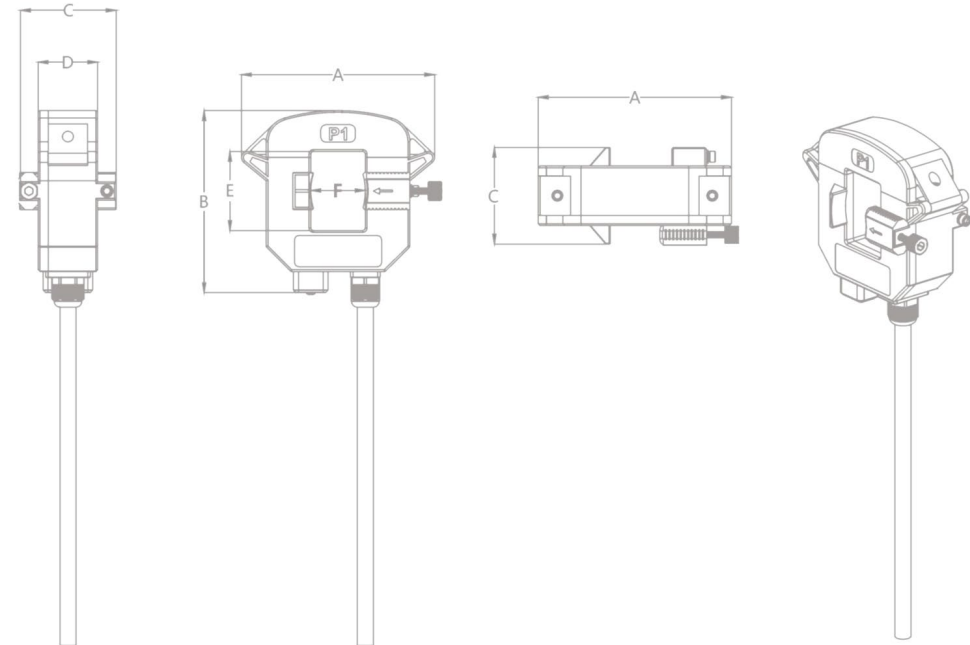
- Electrical fire monitoring system
- Fire equipment power supply monitoring system
- Intelligent power system
- Smart grid, substation transformation
- Environmental protection detection
- Small current grounding system
- Relay protection
- Motor protection system

>Electrical specifications:

Electrical specifications	
Standards	IEC61869-1,-2
Voltage level	0.4/0.66/0.69/0.72KV
Load Capacity	5VA/2.5VA
Accuracy class	0.5s, 0.5, 1.0
Operating frequency	50-60Hz
Shell material	PA/PC Flame retardant UL94V-0
Core material	Nanocrystalline/ Silicon steel/ Ferrite core
Altitude	3000M
Protection level	IP65/ IP67
Internal structure	Waterproof seal ring / puncture needle
Operating temperature	-40 °C ~ +70 °C
Dielectric strength	3.75KVAC/Min

P/N	INPUT (A)	Output	Accuracy	DIMENSIONS(mm)					
				A	B	C	D	E	F
LO-CTHW6-64	5-800A	0-5A 0-5V	0.2	155	130	78	48	64	34
LO-CTHW5-104	5-2000A		0.5s	165	175	78	48	104	54
LO-CTHW5-124	5-4000A		1.0	195	200	78	48	124	54

>Dimensions:



Expanding possibilities

www.ctsensorducer.com

LO-CTHW7 Split-core type out door water-proof current transformer

Professional current transformers & sensors manufacturer

*E*xpanding Possibilities



Wuxi Liou Electronics Co Ltd
www.ctsensorducer.com

SERIES: LO-CTHW7



Split-core type out door water-proof current transformer

>Product overview

The most notable feature of this series of current transformers is its waterproof capability, making it suitable for outdoor use. The cut surface port is surrounded by a rubber gasket to prevent rainwater from entering. While most so-called waterproof transformers on the market also adopt this rubber gasket method, relying solely on this approach has limitations, as it cannot guarantee waterproofing of the entire transformer body.

Our company utilizes one-piece molding technology, where the transformer is directly formed as a solid body within the mold. The plastic completely and seamlessly encases the entire transformer. In addition, the secondary side leads are equipped with waterproof terminals and sheathed cables, ensuring not a single drop of rainwater can enter the transformer body.

Tested and certified by authoritative institutions, our transformers have achieved an IP67/IP65 waterproof rating. This product complies with the relevant requirements of IEC61869-1 and IEC61869-2 standards.

>Application

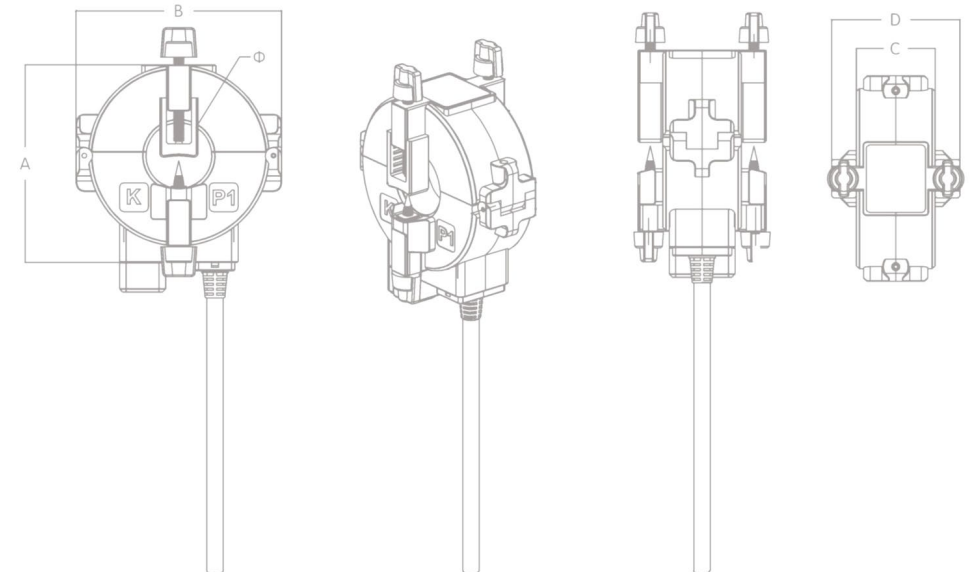
- Electrical fire monitoring system
- Fire equipment power supply monitoring system
- Intelligent power system
- Smart grid, substation transformation
- Environmental protection detection
- Small current grounding system
- Relay protection
- Motor protection system

>Electrical specifications:

Electrical specifications	
Standards	IEC61869-1,-2
Voltage level	0.4/0.66/0.69/0.72KV
Load Capacity	5VA/2.5VA
Accuracy class	0.5s,0.5,1.0
Operating frequency	50-60Hz
Shell material	PA/PC Flame retardant UL94V-0
Core material	Nanocrystalline/ Silicon steel/ Ferrite core
Altitude	3000M
Protection level	IP65/ IP67
Internal structure	Waterproof seal ring / puncture needle
Operating temperature	-40 °C ~ +70 °C
Dielectric strength	3.75KVAC/Min

P/N	INPUT	Output	Accuracy	DIMENSIONS(mm)				
	(A)			Ø	A	B	C	D
LO-CTHW8-40	5-1000A	0-5A	0.2 0.5s	40	120	125	48	78
LO-CTHW8-60	5-3000A	0-1V	0.5 1.0	60	140	145	48	78

>Dimensions:



Expanding possibilities

www.ctsensorducer.com

LO-CTHW8 Split-core type out door water-proof current transformer

Professional current transformers & sensors manufacturer

*E*xpanding Possibilities



Wuxi Liou Electronics Co Ltd
www.ctsensorducer.com

SERIES: LO-CTHW8



Split-core type out door water-proof current transformer

>Product overview

The most notable feature of this series of current transformers is its waterproof capability, making it suitable for outdoor use. The cut surface port is surrounded by a rubber gasket to prevent rainwater from entering. While most so-called waterproof transformers on the market also adopt this rubber gasket method, relying solely on this approach has limitations, as it cannot guarantee waterproofing of the entire transformer body.

Our company utilizes one-piece molding technology, where the transformer is directly formed as a solid body within the mold. The plastic completely and seamlessly encases the entire transformer. In addition, the secondary side leads are equipped with waterproof terminals and sheathed cables, ensuring not a single drop of rainwater can enter the transformer body.

Tested and certified by authoritative institutions, our transformers have achieved an IP67/IP65 waterproof rating. This product complies with the relevant requirements of IEC61869-1 and IEC61869-2 standards.

>Application

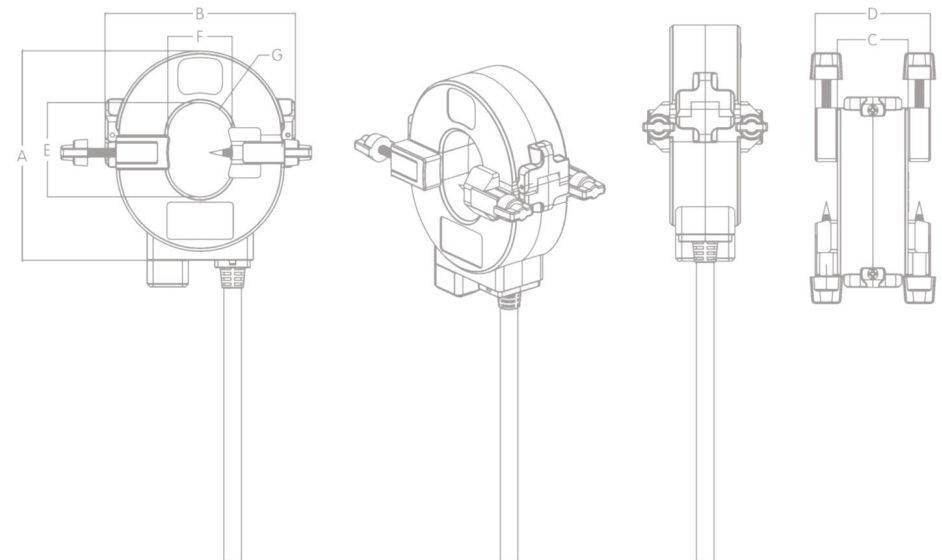
- Electrical fire monitoring system
- Fire equipment power supply monitoring system
- Intelligent power system
- Smart grid, substation transformation
- Environmental protection detection
- Small current grounding system
- Relay protection
- Motor protection system

>Electrical specifications:

Electrical specifications	
Standards	IEC61869-1,-2
Voltage level	0.4/0.66/0.69/0.72KV
Load Capacity	5VA/2.5VA
Accuracy class	0.5s, 0.5, 1.0
Operating frequency	50-60Hz
Shell material	PA/PC Flame retardant UL94V-0
Core material	Nanocrystalline/ Silicon steel/ Ferrite core
Altitude	3000M
Protection level	IP65/ IP67
Internal structure	Waterproof seal ring / puncture needle
Operating temperature	-40 °C ~ +70 °C
Dielectric strength	3.75KVAC/Min

P/N	INPUT	Output	Accuracy	DIMENSIONS(mm)						
	(A)			A	B	C	D	E	F	G
LO-CTHW8-44	5-1000A	0-5A 0-5V	0.2	142	129	48	78	64	44	R22
LO-CTHW8-84	5-2000A		0.5s	164	139	48	78	84	54	R27
LO-CTHW8-104	5-4000A		1.0	182	139	48	78	104	54	R27

>Dimensions:



Expanding possibilities

www.ctsensorducer.com

Quality Standard and Custom Design Products

LIOU Current Transformer has been an industry leader in design and production of current transformer products for over 20 years. Our focus is to build quality products designed to meet your needs. You may choose from any of our standard products or we can design and build a custom solution specifically for your application.

Designed, Manufactured and Distributed From One Location

Every aspect of your order is handled in house allowing us the opportunity to design, manufacture and ship your current transformer product quickly. Each order is reviewed by one of our qualified engineers to make sure the product you are ordering will work for you.

Superior Goals and Higher Expectations

It is the goal of LIOU Current Transformer to maintain its position as a worldwide industry leader in current transformer design and production. We will accomplish this by providing you with quality products and services that meet or exceed your current and future expectations.

Our Objective Is For You to Have Full Confidence in LIOU Current Transformer.

Each employee, at every level within the company, understands your satisfaction is fundamental to our growth and long-term development. LIOU Current Transformer believes that this level of quality will be achieved by:

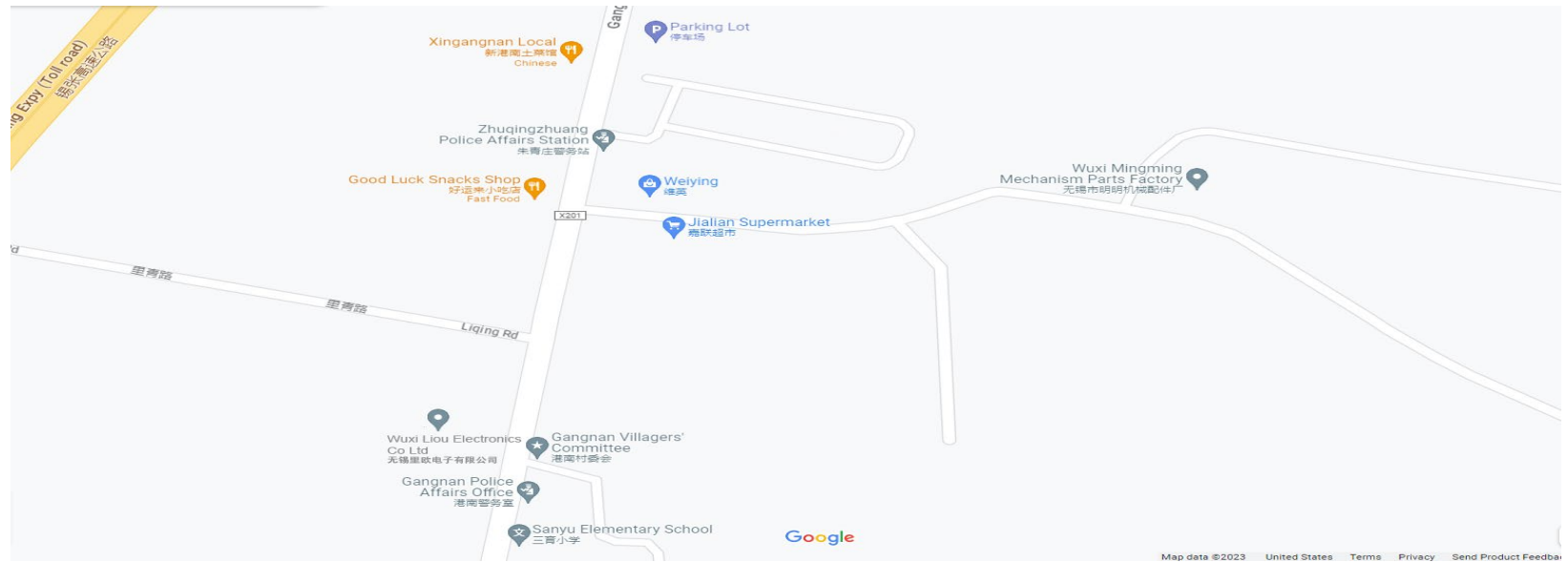
- 1.A Total Quality Management approach. Every employee, supplier and customer is regarded as an essential part of the quality achievement process.
- 2.An error-free performance standard, based on prevention and development of a "Get It Right The First Time" work environment.
- 3.Implementation and maintenance of a quality assurance process that includes a hands on inspection of all your products during the manufacturing process with a final quality inspection prior to shipping.
- 4.Adhering to safety standards.
- 5.Development of all employees through continued training.

We look forward to demonstrating to you the superior quality and customer service our customers have come to expect from LIOU Current Transformer.

Contact us

Expanding Possibilities

Allan Yue
Sales Manager
Wuxi Liou Electronics Co.,Ltd
www.ctsensorducer.com



currentsensor@126.com
lioutronics@wxliou.com



Whatsapp/Cell phone
+86 15371097096



www.ctsensorducer.com
www.wxliou.com

